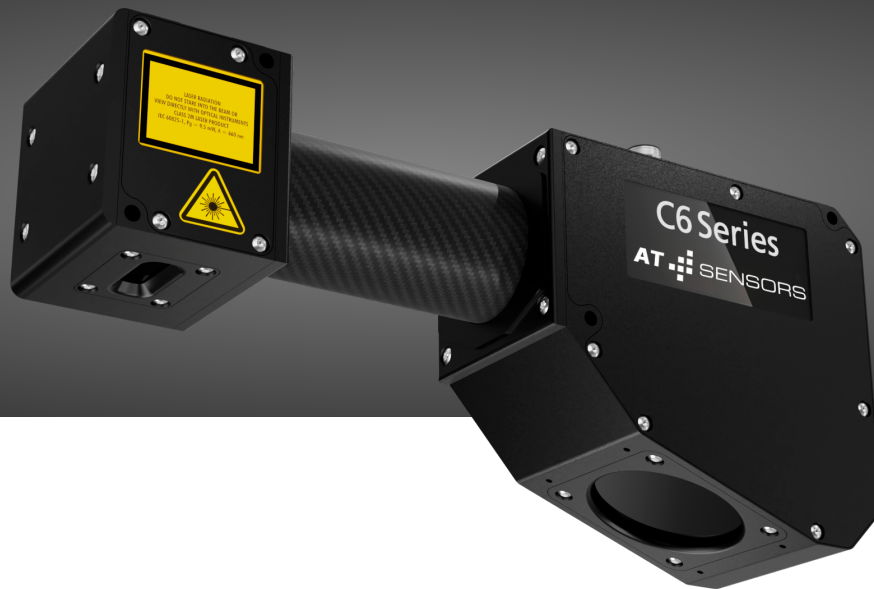


## MCS Series DATA SHEET

PN: 602345672, Model: C6-S7-4090-MCS-25-180-430-SX-1G-660-3R



The Modular 3D Compact Sensor (MCS) from AT - Automation Technology is revolutionizing 3D image processing with its unique modularity, flexibility and high performance. This innovative system allows individual configuration in terms of scan width, measurement accuracy, speed, triangulation angle and working distance to perfectly match the needs of specific applications. With an unprecedented profile speed of 200 kHz and a resolution of 4096 points per profile, the MCS sets technological standards. It overcomes traditional hurdles such as high NRE costs and long development times by combining the reliability of a series product with the flexibility of a customized solution, without additional costs or minimum order quantities.

- **Freely configurable, factory-calibrated modular 3D sensors for individual solutions**
- **Five triangulation angles available (15, 20, 25, 30, 40)**
- **Four different sensor resolutions available (1280, 2040, 3070, 4090)**
- **No extra costs, long delivery times or minimum order quantities**
- **Available with different laser classes and wavelengths**



Visit our Website



Contact us



Visit our Product Documentation

AT - Automation Technology GmbH  
Hermann-Bössow-Straße 6-8  
23843 Bad Oldesloe

AT - Automation Technology, Inc.  
380 Main Street, Suite 203  
Stoneham, MA 02180

www.at-sensors.com  
support@automationtechnology.de  
+49 (0)4531 / 88011-42



Model Information

Model Name	C6-S7-4090-MCS-25-180-430-SX-1G-660-3R
Part Number	602345672

General Data

Points per Profile	4096
Triangulation Angle	25 °
Working Distance	433 mm
Laser Safety Class	class3r
Laser Wavelength	660 nm
Laser Output Power	-
Laser Line Width	-
Linearity Z-Axis	0.007 % of calibrated Z-Range
Profile speed with 200-row region	-
Maximum profile speed	-

Field of View

	Nominal	Near Field	Far Field
Scan Width	185 mm	144.5 mm	265.9 mm
X-Resolution	45.2 µm	35.3 µm	64.9 µm
Z-Resolution	3.7 µm	-	-

Z-Range

	Full	Near Field	Far Field
Z-Range	300 mm	100 mm	200 mm

Technical Specifications

Interface	Gigabit-Ethernet (1GigE)
Inputs	Encoder A+, A-, B+, B-, Z+, Z- (TTL level) Two freely configurable digital inputs (+5 to +24 VDC)
Outputs	Two freely configurable digital outputs (+5 to +24 VDC)
Power Supply	Sensor supply +10 to +24 VDC (max. +27 VDC ) Laser supply +10 to +24 VDC
Housing	Anodized aluminum IP67 certified
Weight	2.0000 g
Environmental Conditions	Operating temperature: 0 to +40 °C Storage temperature: -20 to +80 °C Relative humidity: 20 to 80 % (non-condensing)
Vibration Resistance	Sinusodial: DIN EN 60068-2-6:2008-10: 2g, 10-150 Hz Random: DIN EN 60068-2-64:2020-09: 7g, 10-500 Hz
Shock Resistance	DIN EN 60068-2-27: 2010-02: 15g, 3ms
Supported Standards	GenICam GigEVision
Firmware Features	RegionTracking, RegionSearch, Multiple Regions, MultiPart, AutoStart, HistoryBuffer, MultiSlope, MultiPeak
Software	SolutionPackage, MetrologyPackage, cxSDK for C, C++, .Net, Python, Matlab, Halcon

 Visit our Website

 Contact us

 Visit our Product Documentation

AT - Automation Technology GmbH  
Hermann-Bössow-Straße 6-8  
23843 Bad Oldesloe

AT - Automation Technology, Inc.  
380 Main Street, Suite 203  
Stoneham, MA 02180

www.at-sensors.com  
support@automationtechnology.de  
+49 (0)4531 / 88011-42