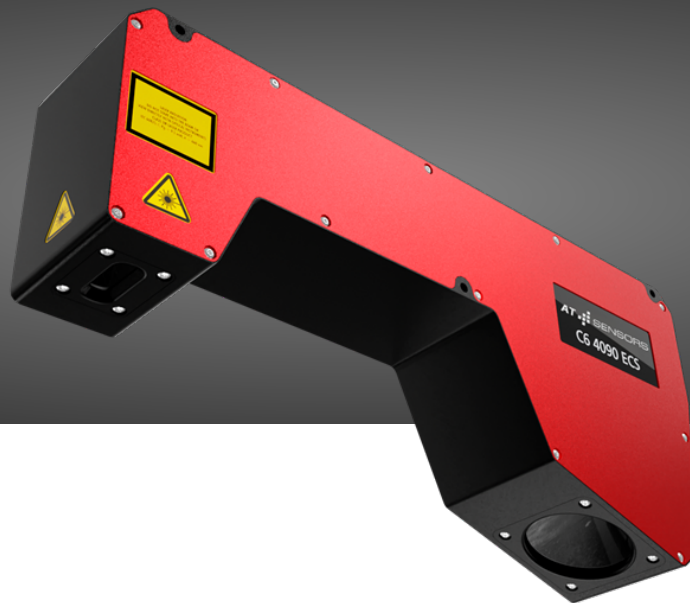


ECS-Series DATA SHEET

PN: 602345542, Model: C6-S7-4090-ECS-18-1020-744-SX-1G-660-2M



The ECS series (Eco Compact Sensor) represents the latest innovation in 3D sensor technology, characterized by its economy and performance. These sensors are particularly cost-effective, thanks to the use of lower cost optics and sensors and the support of class 2M lasers with a wavelength of 660nm, while offering reliable performance at an affordable price. Designed for standard applications in the food, logistics and robot vision industries where high-end technology is not required, ECS sensors deliver fast and accurate data acquisition with an output of 2048 points per profile and speeds up to 43 kHz. They offer various field of views and a compact design for easy integration as well as fast software connectivity through GigE-Vision / Genl Cam, making them ideal for cost and efficiency conscious projects.

- **Best price-performance ratio: Cost-effective 3D sensor for demanding applications**
- **Software standards for easy integrations: GigE Vision, GenlCam and third-party software support**
- **Cross-industry application area: Ideal for the food industry, logistics and robot vision**



Visit our Website



Contact us



Visit our Product Documentation

AT - Automation Technology GmbH
Hermann-Bössow-Straße 6-8
23843 Bad Oldesloe

AT - Automation Technology, Inc.
380 Main Street, Suite 203
Stoneham, MA 02180

www.at-sensors.com
support@automationtechnology.de
+49 (0)4531 / 88011-42



Model Information

Model Name	C6-S7-4090-ECS-18-1020-744-SX-1G-660-2M
Part Number	602345542

General Data

Points per Profile	4096
Triangulation Angle	18 °
Working Distance	744.2 mm
Laser Safety Class	class2m
Laser Wavelength	660 nm
Laser Output Power	-
Laser Line Width	-
Linearity Z-Axis	-
Profile speed with 200-row region	2092 Hz
Maximum profile speed	24875 Hz

Field of View

	Nominal	Near Field	Far Field
Scan Width	1020 mm	-	-
X-Resolution	249 µm	-	-
Z-Resolution	12.6 µm	-	-

Z-Range

	Full	Near Field	Far Field
Z-Range	700 mm	250 mm	450 mm

Technical Specifications

Interface	Gigabit-Ethernet (1GigE)
Inputs	Encoder A+, A-, B+, B-, Z+, Z- (TTL level) Two freely configurable digital inputs (+5 to +24 VDC)
Outputs	Two freely configurable digital outputs (+5 to +24 VDC)
Power Supply	Sensor supply +10 to +24 VDC (max. +27 VDC) Laser supply +10 to +24 VDC
Housing	Anodized aluminum IP67 certified
Environmental Conditions	Operating temperature: 0 to +40 °C Storage temperature: -20 to +80 °C Relative humidity: 20 to 80 % (non-condensing)
Vibration Resistance	Sinusodial: DIN EN 60068-2-6:2008-10: 2g, 10-150 Hz Random: DIN EN 60068-2-64:2020-09: 7g, 10-500 Hz
Shock Resistance	DIN EN 60068-2-27: 2010-02: 15g, 3ms
Supported Standards	GenICam GigEVision
Firmware Features	RegionTracking, RegionSearch, Multiple Regions, MultiPart, AutoStart, HistoryBuffer, MultiSlope, MultiPeak
Software	SolutionPackage, MetrologyPackage, cxSDK for C, C++, .Net, Python, Matlab, Halcon

 Visit our Website

 Contact us

 Visit our Product Documentation

AT - Automation Technology GmbH
Hermann-Bössow-Straße 6-8
23843 Bad Oldesloe

AT - Automation Technology, Inc.
380 Main Street, Suite 203
Stoneham, MA 02180

www.at-sensors.com
support@automationtechnology.de
+49 (0)4531 / 88011-42